

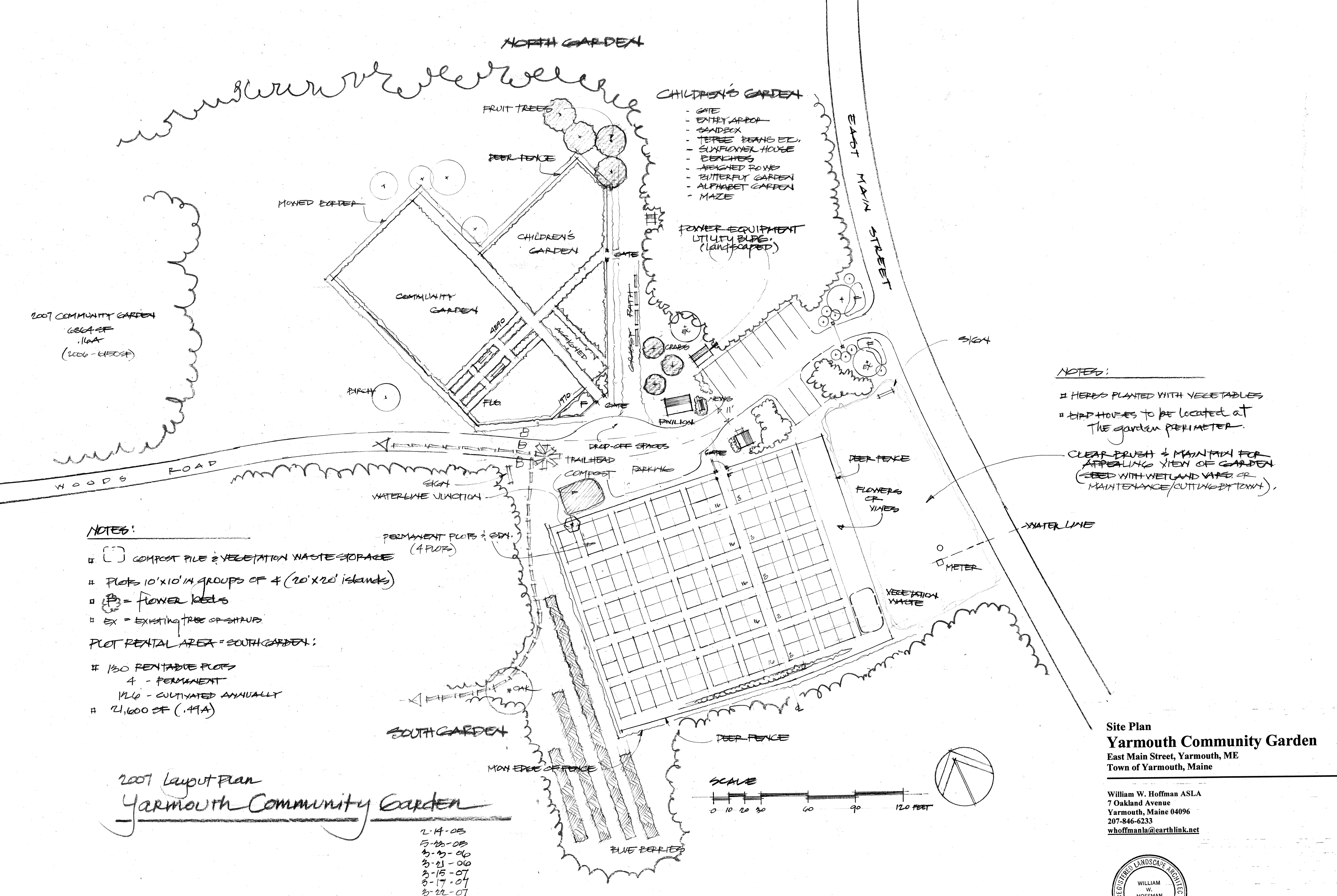
NORTH GARDEN

CHILDREN'S GARDEN

- GATE
- ENTRY ARBOUR
- SANDBOX
- TREE BEANS ETC.
- SUNFLOWER HOUSE
- BENCHES
- ASSIGNED ROWS
- BUTTERFLY GARDEN
- ALPHABET GARDEN
- MAZE

POWER EQUIPMENT  
UTILITY BLDG.  
(LANDSCAPED)

2007 COMMUNITY GARDEN  
6864 SF  
.16A  
(2006 - 4500 SF)



NOTES:

- # [ ] COMPOST PILE & VEGETATION WASTE STORAGE
- # PLOTS 10'X10' IN GROUPS OF 4 (20'X20' ISLANDS)
- # [F] = FLOWER BEDS
- # EX = EXISTING TREE OR SHAUP

PLOT RENTAL AREA = SOUTH GARDEN:

- # 130 RENTABLE PLOTS
- 4 - PERMANENT
- 126 - CULTIVATED ANNUALLY
- # 21,600 SF (.49A)

NOTES:

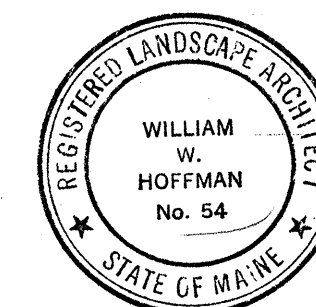
- # HERBS PLANTED WITH VEGETABLES
- # BIRD HOUSES TO BE LOCATED AT THE GARDEN PERIMETER.
- CLEAR DRIVE & MAIN PATH FOR APPEALING VIEW OF GARDEN (SEED WITH WETLAND VEG. OR MAINTENANCE/CUTTING BY TOWN)

2007 Layout Plan  
Yarmouth Community Garden

- 2-14-05
- 5-16-05
- 5-19-06
- 5-21-06
- 5-15-07
- 5-17-07
- 5-22-07
- 5-11-08
- 5-22-09

Site Plan  
Yarmouth Community Garden  
East Main Street, Yarmouth, ME  
Town of Yarmouth, Maine

William W. Hoffman ASLA  
7 Oakland Avenue  
Yarmouth, Maine 04096  
207-846-6233  
whoffmania@earthlink.net



SCALE

